



**FAQs**  
**RETURN TO CAMPUS**  
**POST MOVEMENT CONTROL ORDER**  
**FOR LEARNING & TEACHING AND**  
**RESEARCH ACTIVITIES**

**DATE OF RELEASE:**  
**7.6.2020**

## 1. WHEN WILL STUDENT RETURN TO CAMPUS?

To ensure the safety and well-being of the campus, the UTM campus will open gradually in two phase beginning **June 1, 2020**. Admissions to the campus will be made in stages to enable the faculty / school to provide a good learning and research environment and to comply with the standard operating procedures (SOP).

The two-phase for returning to campus is illustrated in figure below:

### PHASE 1

1. Postgraduate students in research mode programme: Master of Philosophy and Doctoral of Philosophy.
2. **Starting 14 June 2020**

### PHASE 2

1. Final year/semester students for Diploma, UG & PG (Taught course and mixed mode programme).
2. Postgraduate students in research mode programme who missed the admission in Phase 1.
3. **Starting 1 July 2020**

## **2. WHO CAN RETURN IN PHASE 1?**

During the Phase 1, starting 14 June 2020 till 1 July 2020, only students under this category are allowed to return to campus.

- a. Students who need to attend physical laboratories, workshops, design studios or require specialized equipment to conduct research are allowed to return to campus.
- b. Priority is given to Masters of Philosophy and Doctor of Philosophy who are in the maximum semester of study and completing thesis corrections
- c. Students not in the maximum semester may be considered for admission to the campus based on the support of the supervisor and approval from the faculty.
- d. Students who have been staying at UTM's residences since the Movement Control (PKP) began and students who are in the same district as the UTM (Johor Bahru and Kuala Lumpur) campuses will be among the first to be allowed to continue their research.
- e. Students are required to be 'Active' and not postpone their studies by semester 2 20192020.

## **2. WHO CAN RETURN IN PHASE 2?**

During the Phase 2, starting from 1 July 2020, students under these two categories are allowed to return to campus.

- a. Students who are physically required to attend for clinical work, charity training, laboratories, workshops, design studios, practical or in need of specialized equipment.
- b. Students who do not have the access and the conducive environment to implementing online TnL.
- c. Postgraduate students in research mode programme who missed the admission in Phase 1.

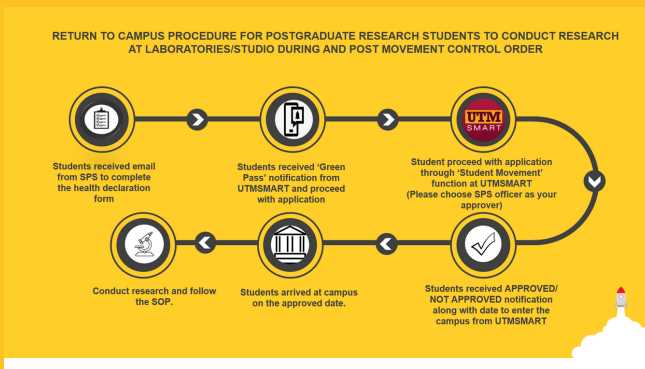
a.

### 3. SHOULD I APPLY TO ENTER? OR WILL I BE NOTIFIED?

Following the SOP outlined by the Ministry of Higher Education, university must identify students returning to campus. Hence, you will be contacted by the School of Graduate Studies/Faculty/School. You need to complete several procedure being getting permission to enter the campus. You are advise to check your email regularly.

### 4. WHAT IS THE PROCEDURE TO ENTER THE CAMPUS?

Figure below illustrates the procedure to enter the campus.



### 5. IF I DO NOT RECEIVE ANY NOTIFICATION, WHOM SHOULD I CONTACT?

If you did not receive any email from the university, kindly contact your faculty/school academic office or the School of Graduate Studies (for postgraduate students ONLY).

## **6. CAN I ATTEND TO CAMPUS TO USE THE UNIVERSITY FACILITIES SUCH AS LIBRARY, WORKSTATION AND COMPUTER LAB?**

Entry to campus are only limited to the categories of students in mentioned above.

## **7. WILL MASKS BE REQUIRED ON CAMPUS?**

Yes, until further notice face masks or cloth face coverings must be worn at all times inside campus buildings and in outdoor spaces on campus.

## **8. AM I ALLOWED TO STAY AT HOSTEL UPON RETURNING TO CAMPUS?**

You are advise to contact your residential college office prior your arrival to campus. You are also advise to refer the Office of Student Affairs website for latest update at <https://www.utm.my/studentaffairs/>

## **9. WILL I BE GIVEN A TIMETABLE FOR MY LAB/WORKSHOP/CLASS SESSION?**

Yes. To ensure that we comply with the SOP, each student will be given a timetable/ slot for their lab/workshop/class session. You must attend during the specified date. It is your responsibility to notify your faculty/school in advance if you are unable to attend the session.

## **10. I HAVE DEFERRED MY STUDY THIS SEMESTER. CAN I CHANGE MY STATUS TO ACTIVE?**

No. With only two months left before the semester ended, we recommend you to use this time to talk with your supervisor about how you can refocus your research and improve your thesis.

## **11. I HAVE DEFERRED MY STUDY THIS SEMESTER. CAN I USE THE LAB/WORKSHOP?**

No, At present the use of laboratories are limited to students with 'active' status.

## **11. WHO CAN I CONTACT IF I HAVE FURTHER ENQUIRY?**

You may contact the office below and person-in-charge if you have further questions

a. Office of Deputy Vice Chancellor (Academic & International)

Pn Hanifah Ahmad (hanifah-a@utm.my)

b. School of Graduate Studies

Nor Kamsiah Manan (kamsiah@utm.my)

c. Office of Undergraduate Studies

En. Mohd Fauzi Abdul Rahman ( fauziphb@utm.my)

d. UTM Diploma Programme

Ms. Nik Maria binti Nik Mahamood (maria.kl@utm.my)

e. UTM Foundation Programme

Mohd Noor Fairoos bin Mohd Nawawi (fairos@utm.space.edu.my)